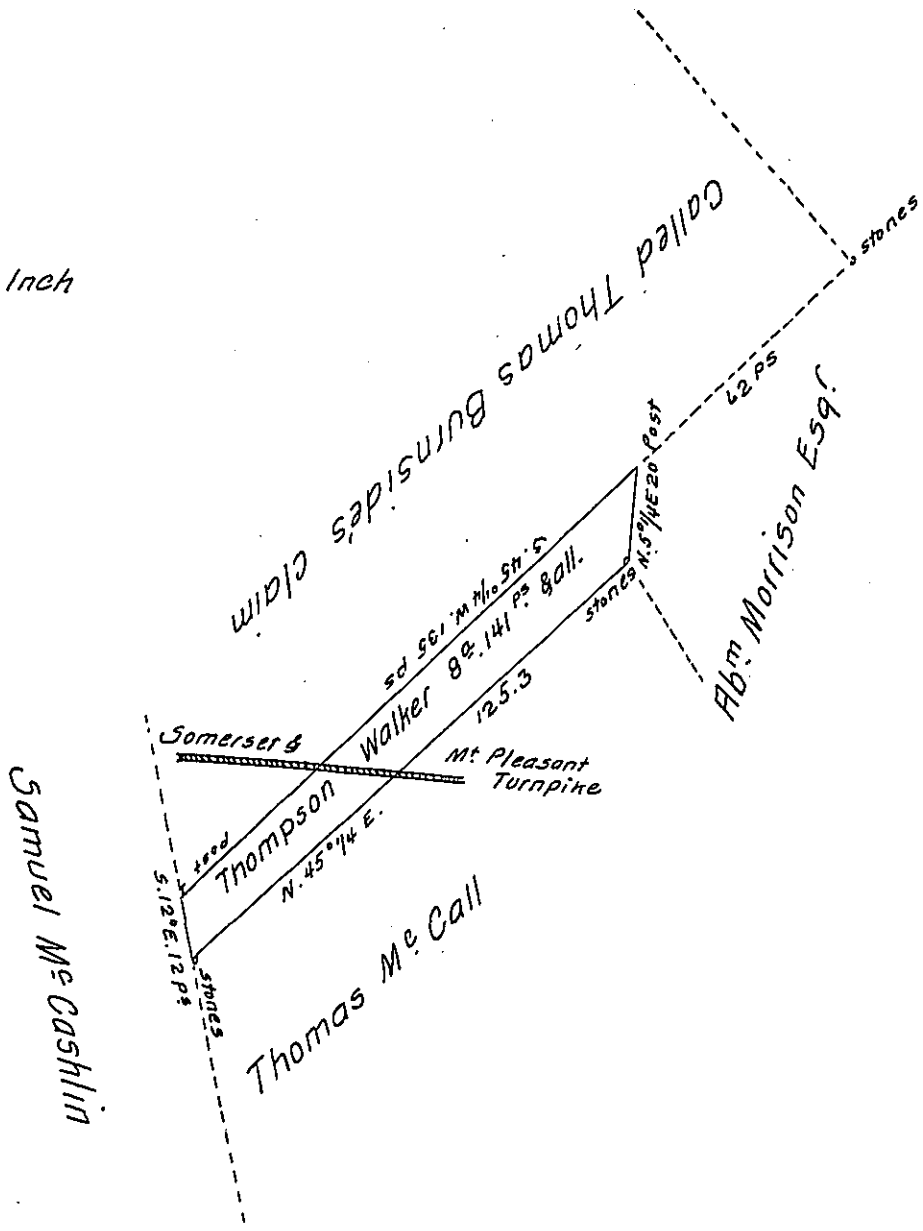


Scale 50 ps. to an Inch



Situate on Laurel Hill, on both sides of the Somerset & Mount Pleasant Turnpike in Somerset Township Somerset County & Surveyed the 23<sup>rd</sup> day of March 1831. in pursuance of a Warrant for 10 Acres dated the 7<sup>th</sup> day of Jan<sup>y</sup> A. D. 1831.

To Jacob Spangler Esq<sup>r</sup> } pr. Bernard Connelly J<sup>r</sup> D. S.  
 Surveyor Gen<sup>l</sup> } Som<sup>t</sup> C<sup>e</sup>

Note. John May claims the above by virtue of his improvement, consisting of a Small Cabin which he says he built on the 7<sup>th</sup> Jan<sup>y</sup> last, & a Small piece of ground which he was fencing in on the 23<sup>rd</sup> March 1831. He therefore Caveats the Acceptance of the above Survey & objects to the patent issuing to Thompson Walker.

To J. S. Esq<sup>r</sup> S. G. } B. C. J<sup>r</sup>

IN TESTIMONY that the above is a copy of the original remaining on file in the Department of Internal Affairs of Pennsylvania, made conformably to an Act of Assembly approved the 16th day of February 1833, I have hereunto set my hand and caused the Seal of said Department to be affixed at Harrisburg, this ninth day of May 1907.

*Henry Houck*  
 Secretary of Internal Affairs.